

PRINCIPAL: PEGGY MURPHY, MA  
HEAD OF PRIMARY: TIM WILLIAMS, MA (Ed)  
HEAD OF SECONDARY: RICHARD DALTON, BA  
BOUGHTON LANE, MAIDSTONE, KENT, ME15 9QF  
TEL: OFFICE 01622 743925  
EMAIL: [office@five-acre.kent.sch.uk](mailto:office@five-acre.kent.sch.uk)  
WEBSITE: [www.fiveacrewood.co.uk](http://www.fiveacrewood.co.uk)



23<sup>rd</sup> October 2015

Dear Parents and Carers,

As we embark on our first break of the new academic year, I felt it was a good time to revisit some of the activities that have happened this term and update you on our initiatives.

### New staff and pupils

We have welcomed 42 new pupils to school this term. It is remarkable how quickly they have all settled in to school life and made friends. 28 new members of staff have also started with us this term, and again they have hit the ground running! Although we are continually growing in numbers, it is really positive that we continue to retain the 'family' feeling within the school.

### Events

Harvest Festival was a great success- thank you to all of you who supported your children by coming to see them and also donating food. The pupils worked very hard and we had some memorable class performances. They were, as always, ably supported by the staff.

We had a Rugby World Cup day, where each class 'adopted' one of the rugby teams. The pupils had a brilliant time completing the activities which included tackle bags, an obstacle course and tag rugby games. As with all rugby matches, the pupils were suitably muddy once they had completed their activities!!! The pupils really enjoyed the opportunity to participate and experience new activities and the Haka's were a sight to see and hear!!

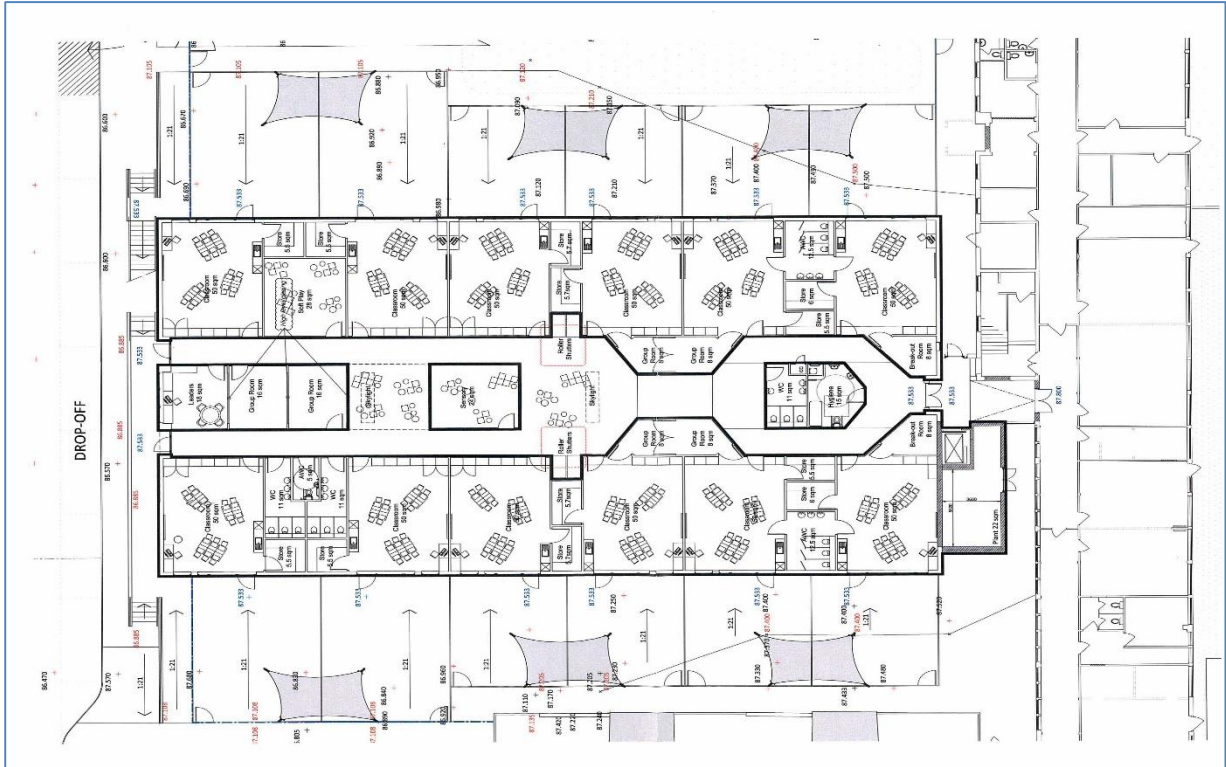
### Building Works

The extension to the hall and the new reception area are progressing well and should be completed early next year. The photos illustrate the progress that has been made so far.



Some of Holly Class joined a building meeting to see the 'walk through' simulation of the new build. I don't think any of us had realised just how big it is going to be. The building and outside play areas will take up the whole of the car park!

Ground floor



First Floor



## Holmesdale

The consultation has now been closed and I am happy to inform you that building works have commenced at Holmesdale Technology College. This means that refurbishment will be completed for the students and staff currently based at Aylesford to transfer to Holmesdale after Christmas. We will now be having a purpose built modular build as well, which is planned to be by mid-February 2016. Up to this point we will only be able to use the refurbished building.

## Health Care Plans and Medical Needs

Please can I remind you that all pupils need to have a completed and signed Health Care Plan for their time in school. This will ensure that we are able to be trained and therefore administer the correct medical interventions for your child.

Finally, I would like to remind you that there is an Inset day on Monday 2<sup>nd</sup> November 2015, so term will commence on Tuesday 3<sup>rd</sup> November 2015.

Have a good break,

*Peggy*